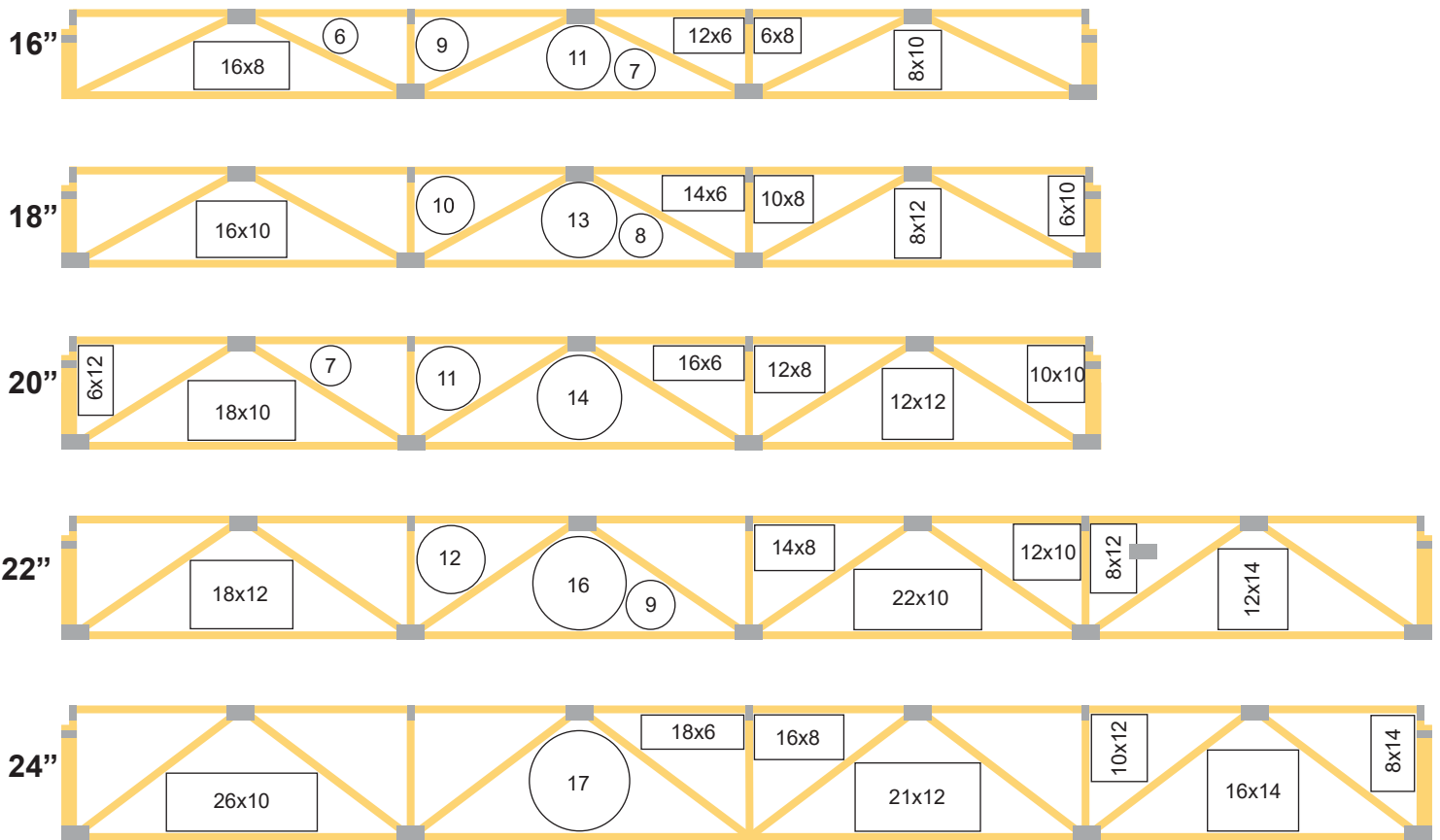




Trusses & Lumber, Inc.  
selecttrusses.com

## Depth Mechanical Service Clearances



## Floor Truss Span Chart

Truss Depth	O.C. Spacing			
	12"	16"	19.2"	24"
12"	20'-6"	20'-6"	20'-1"	17'-11"
14"	23'-11"	23'-10"	22'-1"	19'-7"
16"	27'-3"	26'	23'-9"	22'-1"
18"	30'-5"	27'-11"	25'-4"	22'-6"
20"	33'-11"	29'-7"	26'-10"	23'-10"
22"	36'-3"	31'-2"	28'-3"	25'-1"
24"	37'-11"	32'-07"	29'-7"	26'-3"
40-10-0-5 loading		L/480 LL & L/360 TL Deflection		

Example - A floor truss 18" deep; 19.2" O.C. can clear span 25'4"