

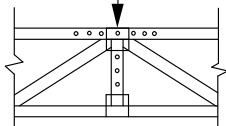
MiTek USA, Inc.



REFER TO INDIVIDUAL TRUSS DESIGN FOR PLATE SIZES AND LUMBER GRADES

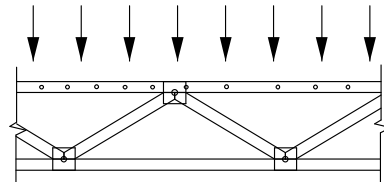
USP WS6 SCREWS or SIMPSON SDS1/4x6

MAX. CONCENTRATED LOAD AS PER CHART BELOW



- 7 SCREWS IN TOP CHORD @ 4" o.c.
- SCREWS IN VERTICAL WEB @ 4" o.c. AND 4" END DISTANCE

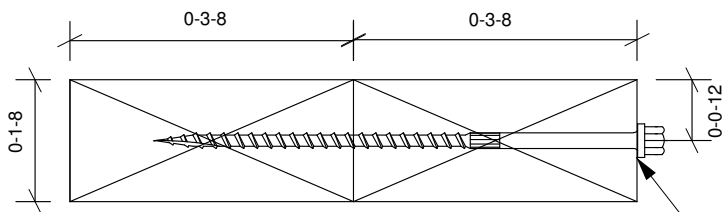
MAX. UNIFORM LOAD AS PER CHART BELOW



- TOP CHORD SCREW SPACING PER CHART BELOW

TRUSS DEPTH	MAX. CONC. LOAD (LBS) FOR 1 VERTICAL				
	# SCREWS PER VERTICAL	SP or DF	EACH ADDL. VERTICAL	SPF or HF	EACH ADDL. VERTICAL
0-9-4	0	3220		2450	
1-0-0	0	3220		2450	
1-2-0	1	3680	+ 460	2800	+350
1-4-0	1	3680	+ 460	2800	+350
1-6-0	2	4140	+ 920	3150	+700
1-8-0	2	4140	+ 920	3150	+700
1-10-0	3	4600	+ 1380	3500	+1050
2-0-0	3	4600	+ 1380	3500	+1050

TOP CHORD SCREW SPACING	MAX. GIRDER LOAD ALONG TOP CHORD (PLF)	
	SP or DF	SPF or HF
0-4-0	1380	1050
0-6-0	920	700
0-10-0	552	420
1-0-0	460	350
1-4-0	344	262
1-6-0	306	232
1-8-0	276	210
2-0-0	230	174



CONNECTION DETAIL

HEADS CAN BE COUNTERSUNK FLUSH WITH SURFACE OF THE LUMBER.

GENERAL NOTES AND SPECIFICATIONS

- 1) MIN. END DISTANCE OF 4" IN ALL MEMBERS.
- 2) GAP BETWEEN TRUSS PLY's SHALL NOT EXCEED 1/8"
- 3) SCREW HEADS TO BE ON LOADED FACE.
- 4) TRUSS PLIES ARE TO BE HELD TIGHT TOGETHER PRIOR TO APPLICATION OF SCREWS.
- 5) SCREWS SHALL NOT BE INSTALLED IN AREAS WHERE LUMBER WANE EXCEEDS 1/4"
- 6) CONCENTRATED LOADS TO BE APPLIED AT TRUSS PANEL POINT WITH VERTICAL WEB.
- 7) SCREW LOCATIONS MAY BE ADJUSTED UP TO 3" TO AVOID OTHER HARDWARE OR LUMBER DEFECTS.
- 8) SHEATHING SHALL BE MECHANICALLY ATTACHED TO EACH TRUSS TOP CHORD WITH FASTENERS AT 12" O.C. MAX..
- 9) MAXIMUM 5 VERTICAL WEBS FOR CONCENTRATED LOAD PLY TO PLY TRANSFERS